

H. D. KIPPEN, A. T. BROWN & J. T. WHITE.  
 MULTIPLE COMPARTMENT COIN CONTROLLED VENDING MACHINE.

APPLICATION FILED SEPT. 2, 1914.

1,139,039.

Patented May 11, 1915.

3 SHEETS—SHEET 1.

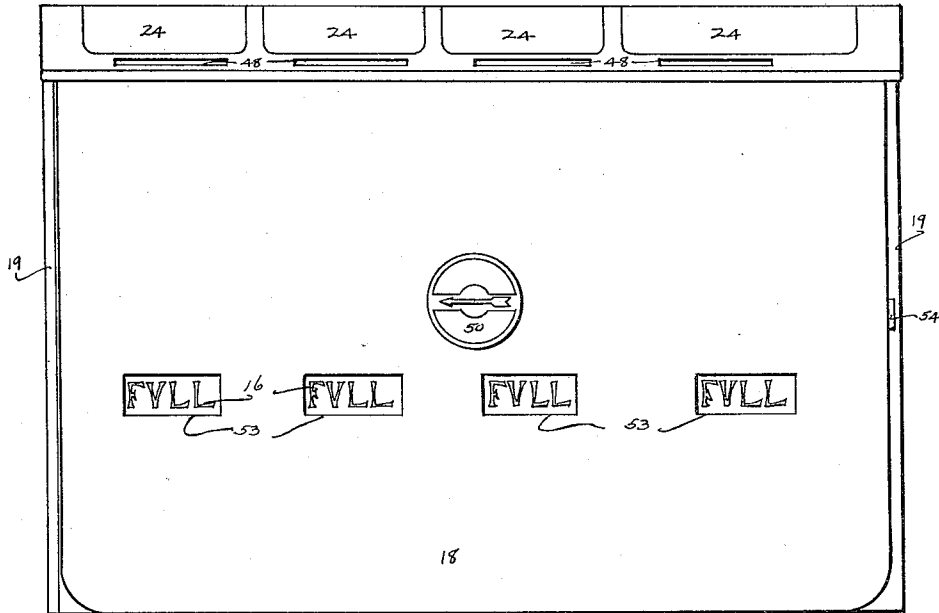


FIG. 1.

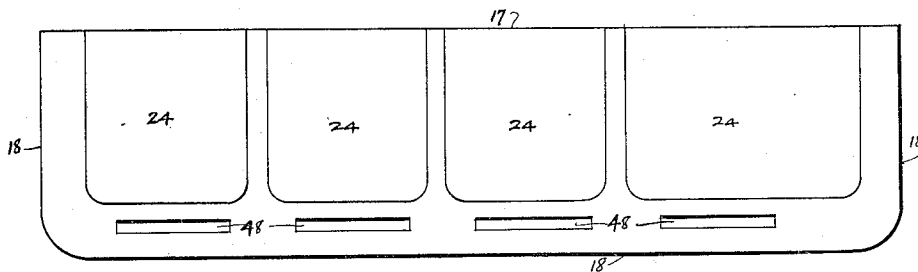


FIG. 2.

Herbert D. Kippen  
 Alexander T. Brown  
 James Silman White  
 INVENTORS

WITNESSES:  
 G. W. Claiborne  
 C. R. Wickstrom.

BY  
 L. L. Westfall  
 ATTORNEY.

H. D. KIPPEN, A. T. BROWN & J. T. WHITE.  
 MULTIPLE COMPARTMENT COIN CONTROLLED VENDING MACHINE.

APPLICATION FILED SEPT. 2, 1914.

1,139,039.

Patented May 11, 1915.

3 SHEETS—SHEET 2.

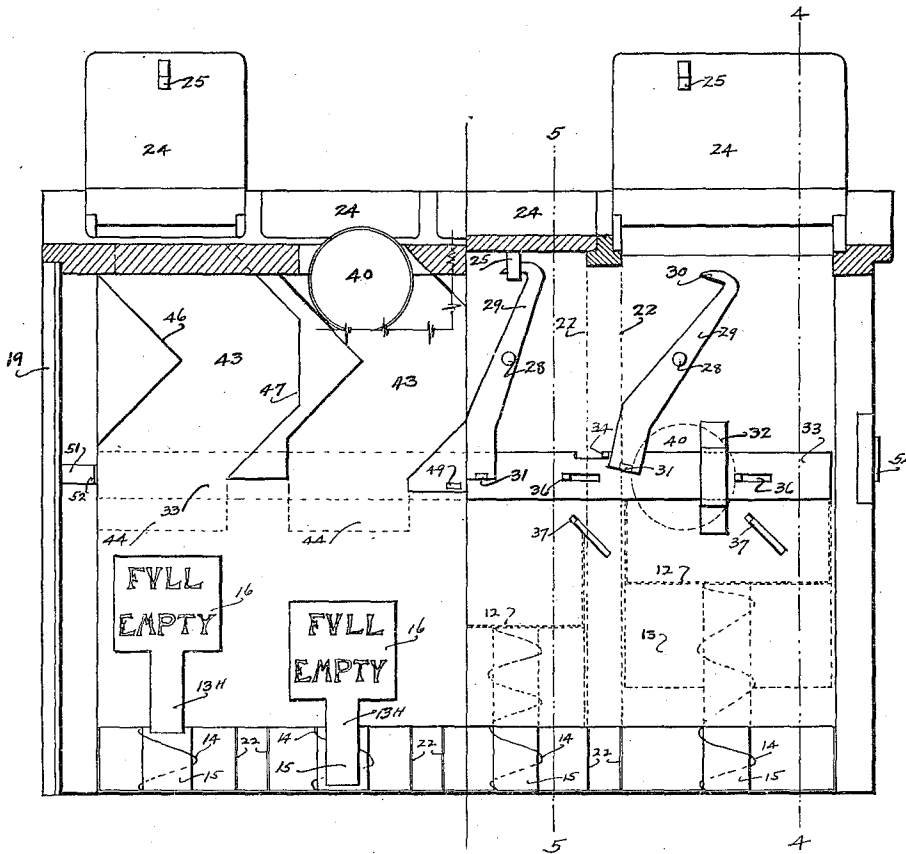


FIG. 3.

Herbert V. Kippen  
 Alexander T. Brown  
 James Gilman White  
 INVENTORS

WITNESSES:

G. J. Campbell  
 C. L. Wickstrom

BY  
 L. L. Westfall  
 ATTORNEY

H. D. KIPPEN, A. T. BROWN & J. T. WHITE.  
 MULTIPLE COMPARTMENT COIN CONTROLLED VENDING MACHINE.  
 APPLICATION FILED SEPT. 2, 1914.

1,139,039.

Patented May 11, 1915.

3 SHEETS—SHEET 3.

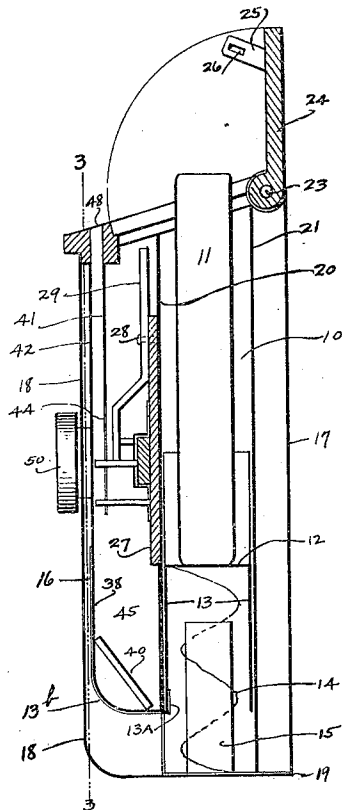


FIG. 4.

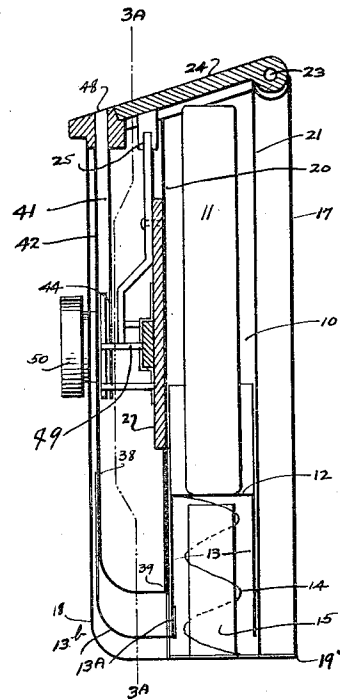


FIG. 5.

Herbert D. Kippen  
 Alexander J. Brown  
 James Silman White  
 INVENTORS

WITNESSES:

Geo. E. Fairfield  
 C. L. Wickstrom

BY  
 L. L. Westfall

ATTORNEY.

# UNITED STATES PATENT OFFICE.

HERBERT D. KIPPEN, ALEXANDER T. BROWN, AND JAMES TILMON WHITE, OF  
SPOKANE, WASHINGTON.

## MULTIPLE-COMPARTMENT COIN-CONTROLLED VENDING-MACHINE.

1,139,039.

Specification of Letters Patent.

Patented May 11, 1915.

Application filed September 2, 1914. Serial No. 859,926.

*To all whom it may concern:*

Be it known that we, HERBERT D. KIPPEN, ALEXANDER T. BROWN, and JAMES TILMON WHITE, citizens of the United States of America, residing at Spokane, in the county of Spokane and State of Washington, have invented certain new and useful Improvements in Multiple-Compartment Coin-Controlled Vending-Machines, of which the following is a specification.

This invention pertains to coin controlled vending machines, and particularly to that class of such machines as have multiple compartments for the containing separately of merchandise each compartment separately controlled.

The object of the invention is to make more simple in construction and operation the class of machines mentioned.

The particular construction and operation of parts will be fully hereinafter disclosed and by reference to the accompanying drawings in which like parts are referred to by like numerals throughout the several views and wherein—

Figure 1, is a front elevation of the machine, Fig. 2, is a top view of the same, Fig. 3, is a view, the left hand portion being a section taken on the line 3—3 of Fig. 4, and the right hand portion being a sectional view taken on the line 3<sup>a</sup>—3<sup>a</sup> of Fig. 5, Fig. 4, is a transverse vertical sectional view taken on the line 4—4 of Fig. 3, and Fig. 5 is a transverse vertical sectional view taken on the line 5—5 of Fig. 3.

Horizontally arranged separate compartments 10 are for the containing of merchandise 11. The merchandise 11 rests upon a base 12 having side walls 13 extending downwardly and engaging a spring 14 supported by a stud 15. Attached to one of the walls 13, as at 13<sup>a</sup>, is a member 13<sup>b</sup> curved outwardly and upwardly and terminating in a flat plate portion 16 upon which is placed, one above the other, the words "Full" and "Empty." The outside casing comprises a rear wall 17 and a wall 18 covering the front, ends and bottom and connected to the rear wall 17 at 19.

The walls 20 and 21 of the compartments 10 extend vertically through the machine and join at right angles with the vertical walls 22. Hinged to the top of the rear wall 17, as at 23, are separate covers 24 for the compartments 10. Attached to the in-

side of the covers 24 are projections 25 having openings 26 therethrough. Rotatably pivoted to a support 27 on the wall 20, as at 28, are levers 29, having hooks 30 at the upper end thereof and outwardly projecting lugs 31 at the bottom thereof. The hooks 30 are adapted for engaging the openings 26 in the projections 25 on the covers when the covers are down and covering the compartments 10.

Horizontally arranged across the machine and slidably adjusted on the support 27, as by the straps 32, is a bolt 33. Reaching from the bolt 33 are pins 34. Attached to and extending outwardly from the bolt 33 are pins 36. Attached to and extending outwardly from the support 27 are pins 37. A horizontally arranged wall 38 connected to the wall 20 at 39 forms a receptacle 45 for coin 40. Vertically arranged walls 41 and 42 form channels 43 for the reception and direction of the coins 40 to a location over the bolt 33 where they pass to a position between the lugs 31 and pins 36 and are held in that position by said lugs and pins until released as hereinafter explained. Guides 44 direct the coins 40 to the receptacle 45 after the same have been released from their position over the bolt 33. Side walls 46 and 47 of the channel 43 are made so as to have a double angle as shown in Fig. 3 in order to prevent the tripping of and the opening of the device by other means than by a coin. Openings 48 of a size corresponding to the size of the coin that it is required to trip and open the receptacles 10, are provided in the top of the machine and lead to the channels 43. A stem 49 attached to the bolt 33 extends through an opening in the wall 18 and has attached thereto, outside of the wall 18, a button 50. Attached to the wall 17, as at 51, is a spring 52 normally bearing against the end of the bolt 33.

This machine is especially designed for attachment to the back of seats in street cars, the separate compartments being for different varieties of merchandise, which may be designated by labels on the tops of the compartments 10.

A person desiring to purchase merchandise will deposit a coin in the slot 48 corresponding with the compartment desired to be purchased from. The coin will pass by gravity downwardly through the channel

43 to a position shown in Fig. 3 between the lug 31 on the lever 29 and the pin 36 on the bolt 33. The purchaser will then push the button 50 to the left, carrying the bolt 33 in that direction, which rotates the lever 29 so as to release the hook 30 from the opening 26, thereby unlocking the cover 24 and the merchandise 11 may be taken from the compartment 10. The plate guide 44 and the pin 37 will then guide the coin 40 in its downward course to the coin receptacle 45.

When the merchandise compartments 11 are filled and the covers 24 fastened down, the merchandise 11 forces the supporting base 12 downwardly compressing the spring 14 carrying the walls 13 and the plate 16 downwardly, so that the word "Full" occupies the open space 53 in the front wall 18 as shown in Fig. 1, and when the merchandise 11 is removed from the compartment, the spring 14 forces the base 12, the walls 13 and the plate 16 upwardly, so that the word "Empty" appears in the open space 53 in the front wall 18, thereby indicating to the intending purchaser what compartments have merchandise and what compartments have not.

After the purchaser has thrown the bolt 33 to the left to open the compartment, and has released the same, the spring 52 returns the bolt 33 to normal position, and the pins 34 return the levers 29 to normal position.

The front wall 18 may be released and removed to gather the coins 40 from the coin receptacle 45. A lock 54 secures the wall 18 to the mechanism as against intruders.

What is claimed is,

1. A coin controlled vending machine comprising a casing having a multiple number of separate compartments, an independent lid and coin slot for each compartment, an independent locking lever for each lid, a

common actuating bolt slidably mounted transversely across the machine to cooperate with coins to actuate the levers to release the lids, an independent coin channel for each compartment, independent means in each of said channels for directing the coin to cooperate with said bolt to release the lids and means for actuating said bolt, together with independent means in each compartment whereby the merchandise in each of said compartments cooperates with said means to adjust a face plate to indicate the presence of merchandise in said compartments, and means for adjusting said face plates to indicate the absence of merchandise in the compartments.

2. A coin controlled vending machine comprising a casing having a multiple number of separate compartments, an independent lid and coin slot for each compartment, an independent locking lever for each lid, a common actuating bolt slidably mounted horizontally across the machine to cooperate with coins to actuate the levers to release the lids, the actuating means comprising a lug on each lever and a corresponding pin on the bolt, between which the coin takes its place so that a movement of the bolt rocks the lever and releases the same from its hold on the lid, an independent coin channel for each compartment, independent means in each of said channels for directing the coin to cooperate with said bolt to release the lids and means for actuating said bolt.

In testimony whereof we affix our signatures in presence of two witnesses.

HERBERT D. KIPPEN.

ALEXANDER T. BROWN.

JAMES TILMON WHITE.

Witnesses:

JOHN L. WILEY,  
L. L. WESTFALL.